

Entry / ECO

Standard / STD

Professional / PRO

ODM & OEM

Intelligent / INT



LED Batten Light  
DB186B Series





## Introduction

This is a high quality easy replaceable LED batten with high lumen efficiency. It adopts high lumen efficiency SMD light source, PC cover is internal stripe design which makes a uniform light output. For structure, it has mainly two module parts, light source module and bracket module could be replaced freely; single CCT and 3CCT module can be interchanged based on different bracket modules: wattage switchable, DALI, Emergency, DALI+Emergency. For installation, it utilizes plastic flexibility to clips the light source module into bracket, the end cap mounting hole allows loop in/ loop out connection, which offers more possibility for wider applications.

## Features

- Compact design with screwless surface, which fit the ceiling tightly
- Functions: Adjustable CCT, adjustable wattage, DALI, Emergency, sensor+emergency, PIR sensor
- High lumen efficiency, 150lm/W@4000K
- Size options:600/1200/1500/1800mm
- End cap with mounting hole for loop in/ loop out connection
- Internal flicker free driver

## Application Areas

It is widely used in workshop, warehouse, parking lot, factories, shopping mall etc.

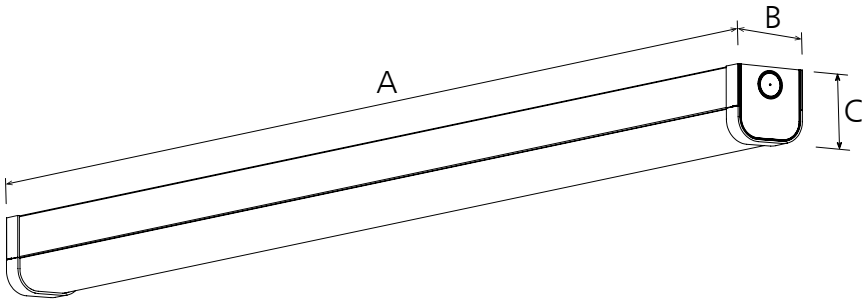






Technical Data Sheet

Code			DB186B-600-20W	DB186B-1200-40W	DB186B-1500-50W	DB186B-1800-60W
Dimension(mm)			600*65*66	1200*65*66	1500*65*66	1800*65*66
Cutout (mm)			-			
Watt(W)			20W@max (optional:16W / 13W / 10W)	40W@max (optional:35W / 25W / 20W)	50W@max (optional:40W / 35W / 25W)	60W@max (optional:50W / 40W / 30W)
Rated Input Voltage			AC220-240V			
Input Voltage			AC198-264V			
LED Module Input			-			
Light Source			SMD			
SDCM			< 6			
CCT(K)			1-CCT: 3000K/4000K/5000K/5700K    3-CCT: 3000K + 4000K + 5700K			
CCT Selection DIP Switch			YES			
Luminous Flux (lm) ±5% CRI80	1-CCT	Non-DIM	2750-2950	5600-6000	7000-7500	8400-9000
		DIM	2750-2950	5600-6000	7000-7500	8400-9000
	3-CCT	Non-DIM	2750-2950	5600-6000	7000-7500	8400-9000
		DIM	2750-2950	5600-6000	7000-7500	8400-9000
CRI			80			
Beam Angle (°)			120°			
UGR			-			
LED Driver			Built-in			
Dimming Option			-	DALI	DALI	DALI
Sensor			PIR sensor			
Emergency Kits			Yes			
Electrical Class			Class I			
Ingress Protection(IP Rating)			IP20			
Impact Resistance(IK Rating)			IK06			
Product Finishing			White RAL9016			
Optics Material			PC			
Housing Material			PC / SPCC			
Lifetime (hr)			50,000H			
Glow wire test (°C)			750°C			
Operating Temp.(°C)			-20°C~40°C			
Storage Temp.(°C)			-20°C~65°C			
Installation			Surface mount / Pendant			



Measurement

Code	Dimension(mm)			Size(mm)	Product Weight (Kg)		Package weight (Kg)		Carton Size(cm)	Qty/ CTN	20GP (pcs)	40HQ (pcs)
	A	B	C		N.W/PC	G.W/PC	N.W/CTN	G.W/CTN				
DB186B-600	600	65	66	600*65*66	0.55	0.78	6.6	10.12	71.5*32*28	12	5376	12096
DB186B-1200	1200	65	66	1200*65*66	0.95	1.34	5.7	8.88	131.5*24.5*19.5	6	2508	5928
DB186B-1500	1500	65	66	1500*65*66	1.14	1.61	6.84	10.66	161.5*24.5*19.5	6	2046	4992
DB186B-1800	1800	65	66	1800*65*66	1.33	1.88	7.98	12.44	191.5*24.5*19.5	6	1782	4212

Driver Datasheet(Non-dimmable)

Total load wattage		20W/16W/13W/10W	40W/35W/25W/20W	50W/40W/35W/25W	60W/50W/40W/30W
Output	Rated output current	130mA@max (optional:110mA / 85mA / 65mA )	270mA@max (optional:230mA / 170mA / 135mA )	335mA@max (optional:270mA / 235mA / 170mA )	410mA@max (optional:340mA / 275mA / 210mA )
	Output Voltage range	DC120-150V			
	Line Regulation	±0.5mA			
	Setup, Rise Time	≤0.5S @230V			
	Flickering Index	0.5%(NO RISK)			
Input	Rated Input Voltage	AC220-240V			
	Input Voltage	AC198-264V			
	Frequency	50/60Hz			
	Rated Input Current	0.10A	0.20A	0.25A	0.30A
	Input Current	0.11A	0.21A	0.27A	0.31A
	Power Factor	≥0.9			
	THD	-			
	Efficiency	≥90%			
Protection	No load wattage	<0.5W @ 230Vac			
	Short circuit protection	PASS			
	Over voltage protection	PASS			
	Over temperature protection	PASS			
Safety & EMC	Withstand voltage	-			
	Isolation Resistance	-			
	Surge	IEC/EN61000-4-5( P<25W; L-N:500V, L/N-PE:1KV)			
	EMC Emission	EN55015, EN61000-3-2			
	EMC Immunity	EN61000-4-2,3,4,5,6,8,11; EN61547			

Driver Datasheet(DALI Dimmable)

Total load wattage		40W	50W	60W
Output	Rated output current	285mA@max (optional:230mA / 165mA / 135mA )	345mA@max (optional:285mA / 230mA / 165mA )	410mA@max (optional:340mA / 270mA / 200mA )
	Output Voltage range	DC54-165V		
	Line Regulation	±5%		
	Setup, Rise Time	≤1S @230V		
	Flickering Index	< 1%(NO RISK)		
Input	Rated Input Voltage	AC220-240V		
	Input Voltage	AC198-264V		
	Frequency	50/60Hz		
	Rated Input Current	0.20A	0.25A	0.30A
	Input Current	0.23A	0.28A	0.34A
	Power Factor	≥0.9		
	THD	-		
	Efficiency	≥90%		
Protection	No load wattage	-		
	Short circuit protection	PASS		
	Over voltage protection	PASS		
Safety & EMC	Over temperature protection	PASS		
	Withstand voltage	I/P-FG:1.5KVac, <5mA 60S		
	Isolation Resistance	-		
	Surge	IEC/EN61000-4-5 (P≥25w L-N:1KV, L/N-PE:2KV)		
	EMC Emission	EN55015, EN61000-3-2		
	EMC Immunity	EN61000-4-2,3,4,5,6,8,11; EN61547		

Datasheet (Emergency)

Input power	3W
Discharge power	3W
Rated Input Voltage(V)	AC230V
Frequency	50/60Hz
Input Voltage	AC200-240V
Rated Input Current	≤0.03A
Battery	6.4V 1500mAh (LifepO4)
Lifetime	Over 2000 cycles
Battery duration	≥3hrs
Charge Period	≤24hrs
Emergency switching time	≤ 1S
Emergency Operating Temp. (°C )	0°C-25°C

Instructions for automatic test option

- 1.Once the unit is powered up it will automaticly initiate a self test and diagnostics as follows:
- Every 4 seconds:Checks for battery disconnection,charger board fault,lamp failure and transformer failure.
  - Every month:Performs a 3 minutes duration test.
  - Every yeat:Performs a 1 Hour or 3 Hours duration test.
- All test functions are factory preset and do not need field adjustment.

2.Dual Colour Indicator LED Status Mesnings

- Green    Solid On    Ready/Normal Operation
- Red       Requires Service

•	One flash, 4 seconds pause	Battery not connected
••	Two flashes, 4 seconds pause	Low battery voltage
•••	Three flashes, 4 seconds pause	Charger board fault
••••	Four flashes, 4 seconds pause	Transformer fault
•••••	Five flashes, 4 seconds pause	LED lamp fault

NOTE:After repairing a service fault,press and hold the test button for 2 seconds to reset the flashing indicator light to green.

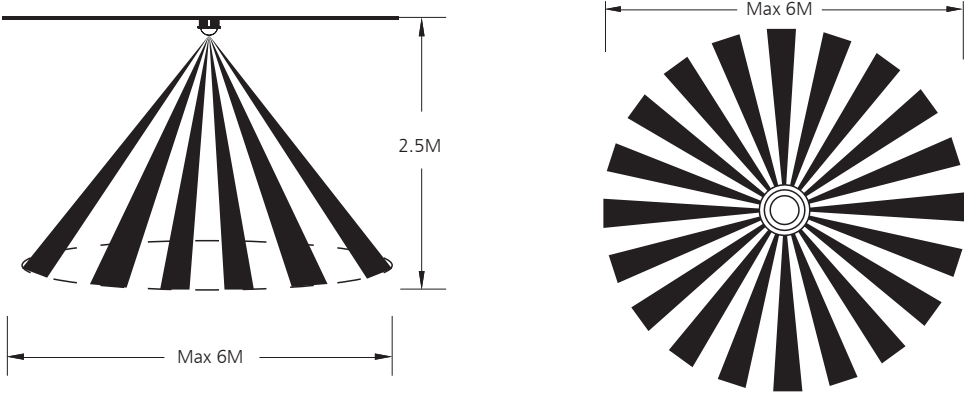
3.Manual Testing

Press test button once	30 seconds duration test
Press test button twice within 2 seconds	3 minutes duration test
Press test button 3 times within 2 seconds	30 minutes duration test
Press test button 4 times within 2 seconds	1 or 3 hours duration test

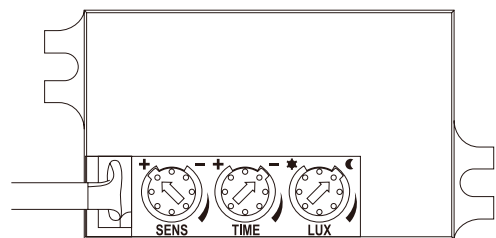
Note: DALI & 1-10V driver specification, please refer to individual driver datasheet.

Sensor Datasheet	
Operating voltage	AC220-240V
Power consumption	1Wmax
Microwave frequency	-
Transmission power	-
Detection angle	90°
Detection Area	2-3M Knob adjustable
Hold time	10S-7min Knob adjustable
Daylight sensor	10-2000lux Knob adjustable
Stand-by DIM Level	-
Stand-by Period	-
Dimming Range	-
Microwave ON/OFF function	-
Installation Height	Recommended height is 2.5m
Minimum mounting distance	Recommended mounting distance should be more than 2m
Operating temperature(°C)	25°C

Detection Range Diagram



Sensor Setting:



Factory settings		
Detection Area	Hold Time	Daylight Sensor
100%	10S	10lux



Detection area:

The detection area can be adjusted by the knob, clockwise adjustment increases the sensitivity, counterclockwise adjustment reduces the sensitivity, the maximum detection distance is 6 meters, the minimum detection distance is 2 meters.  
**Notice 1:** The distance test is carried out under Ta25°C, 1.8 meters wall mounting installation height. The test result is based on the movement along the tangential direction of the sensor, and the detect distance can be adjusted by the dial switch.  
**Notice 2:** Infrared sensor will be affected by temperature. Too high or too low temperature may affect the detect distance or even cause failure to sensor.



Hold time:

The hold time can be adjusted by the knob. Clockwise adjustment increases the hold time, counterclockwise adjustment reduces the hold time, the maximum hold time is 7min, and the minimum hold time is 10S.  
**Notice 1:** The hold time counting should be started after the sensor is powered on and initialized.



Daylight sensor:

The light threshold can be selected through the Knob. Clockwise adjustment increases the light threshold, counterclockwise adjustment reduces the light threshold, the maximum light threshold is 2000lux, and the minimum light threshold is 10lux.  
**Notice 1:** The light threshold may cause a large deviation in different lamps.

Function Table	DB186B-600-20W	DB186B-1200-40W	DB186B-1500-50W	DB186B-1800-60W
Non-dim Wattage Switchable	√	√	√	√
Non-dim Wattage Switchable+CCT Switchable	√	√	√	√
Emergency+Wattage Switchable	-	√	√	√
Emergency+Wattage Switchable+CCT Switchable	-	√	√	√
Non-dim Wattage Switchable+Sensor	√	√	√	√
Non-dim Wattage Switchable+Sensor+CCT Switchable	√	√	√	√
Emergency+Sensor+Non-dim Wattage Switchable	-	√	√	√
Emergency+Sensor+Non-dim Wattage Switchable+CCT Switchable	-	√	√	√
DALI Dim	-	√	√	√
DALI Dim+CCT Switchable	-	√	√	√

Installation Procedure

WARNING ⚡

- 1.Switch off before installation.
- 2.Switch on only after complete installation and examination of the circuit.
- 3.Professional electrician for installation and maintenance only.

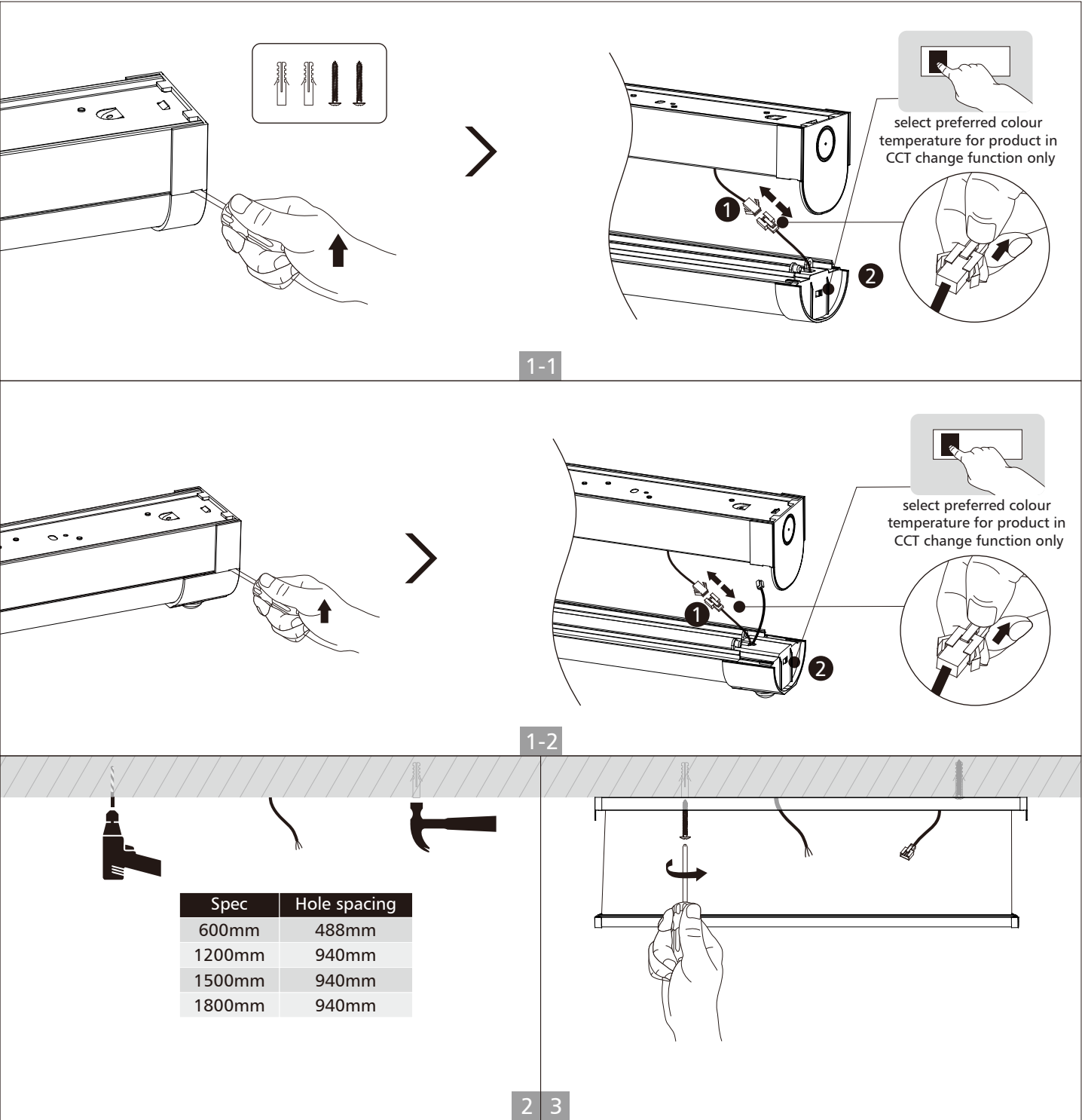


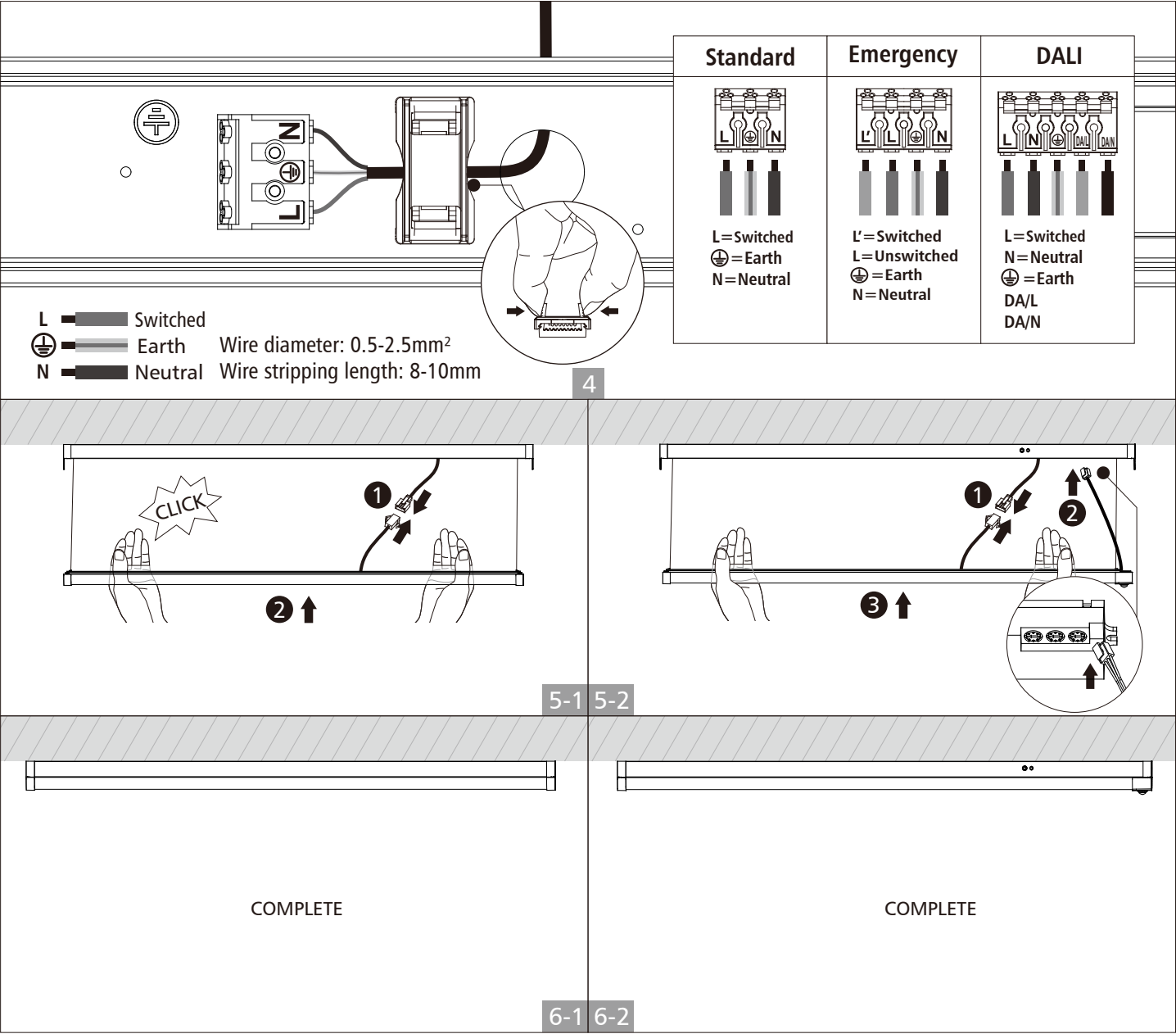
Turn Off  
Power Supply



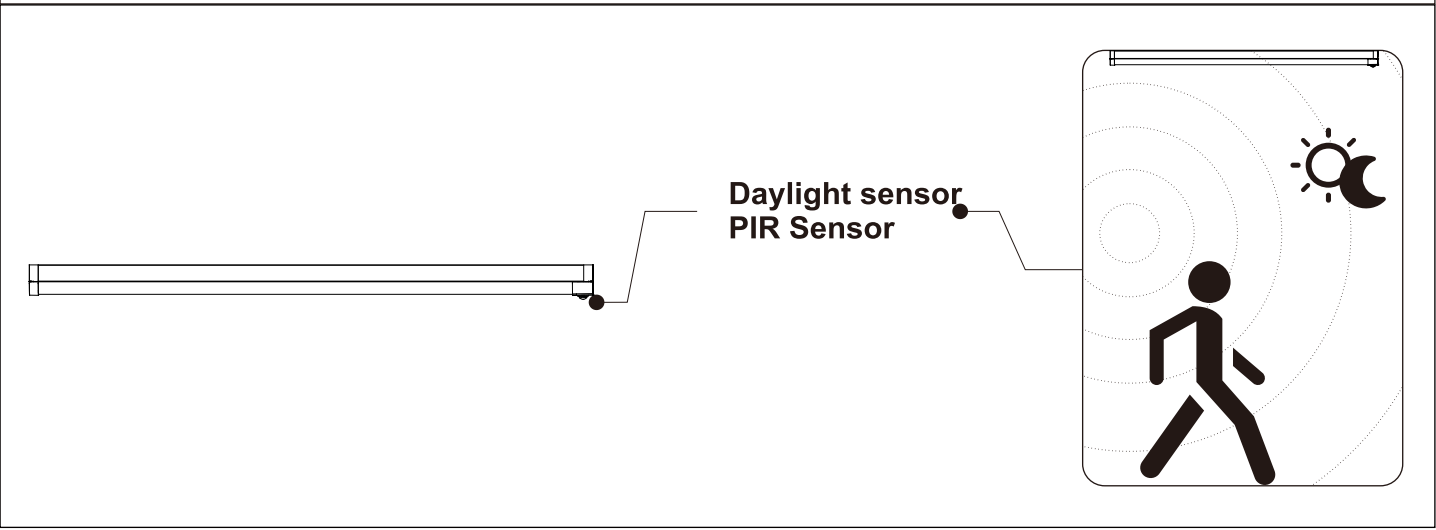
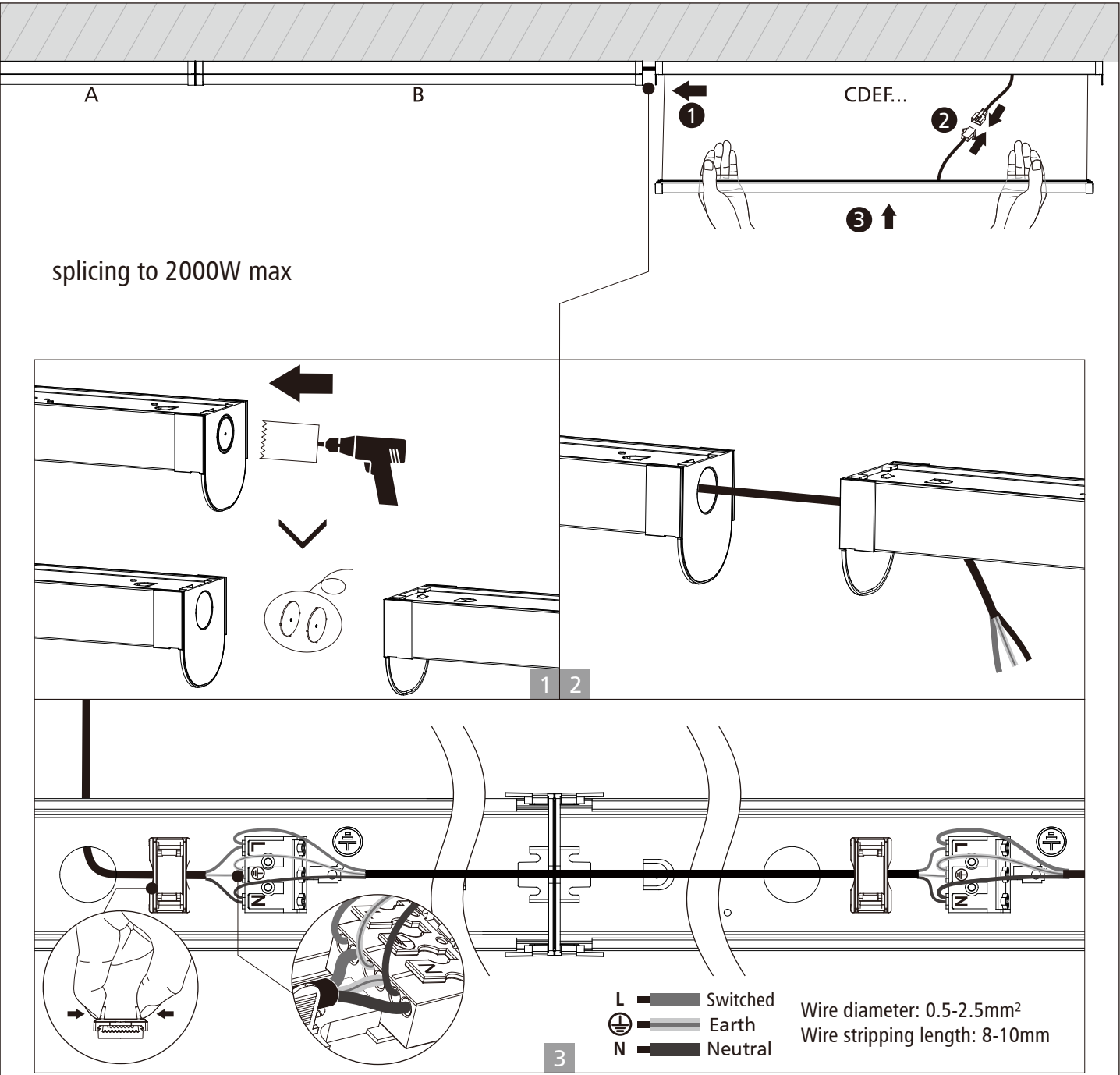
Turn Off power supply before starting any installation. Read instructions & check you have all the tools & accessories to complete the installation correctly.

Surface mount installation







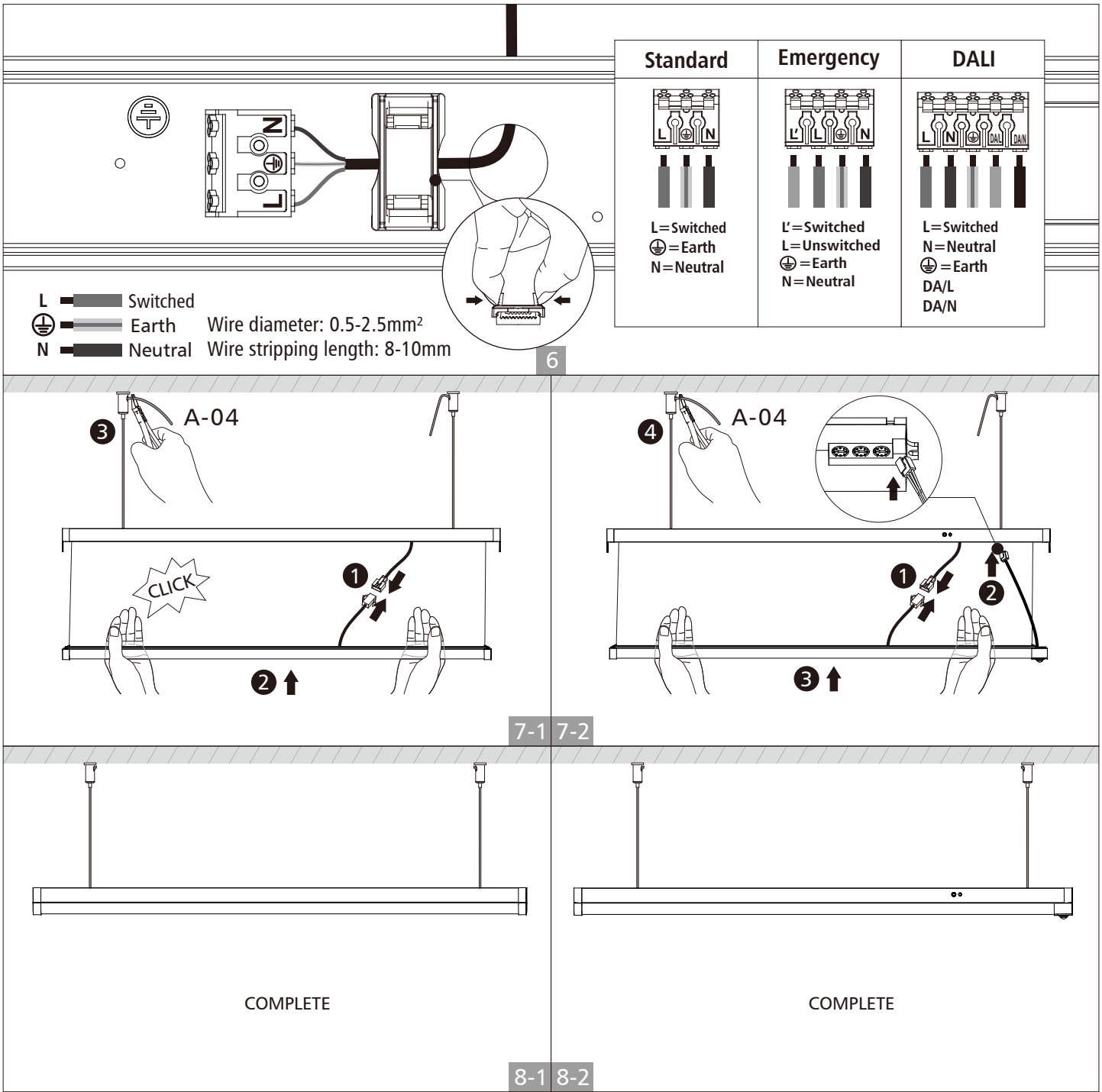
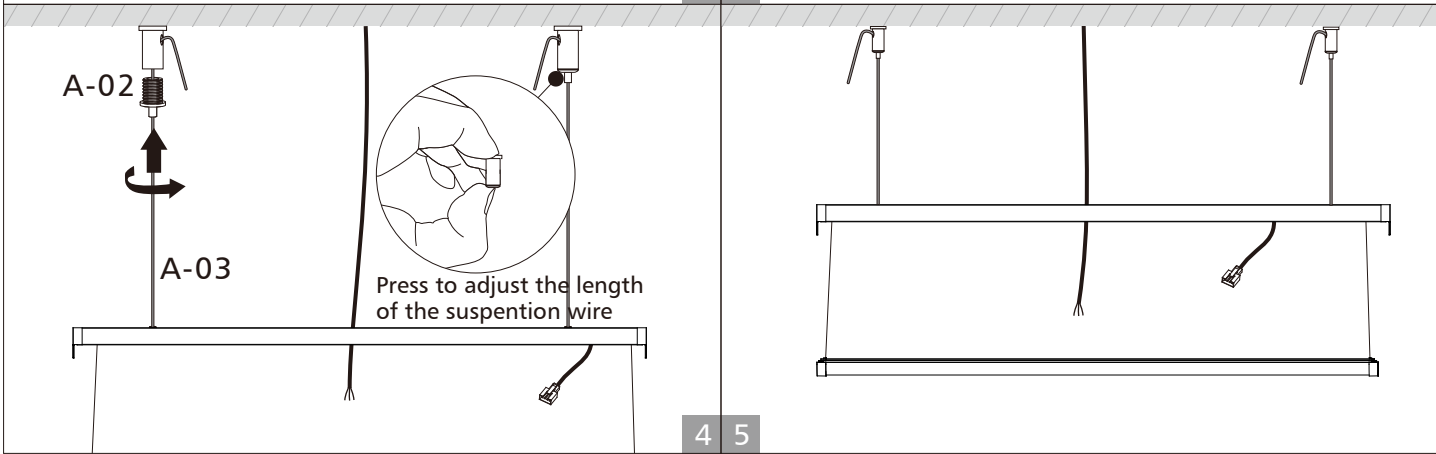
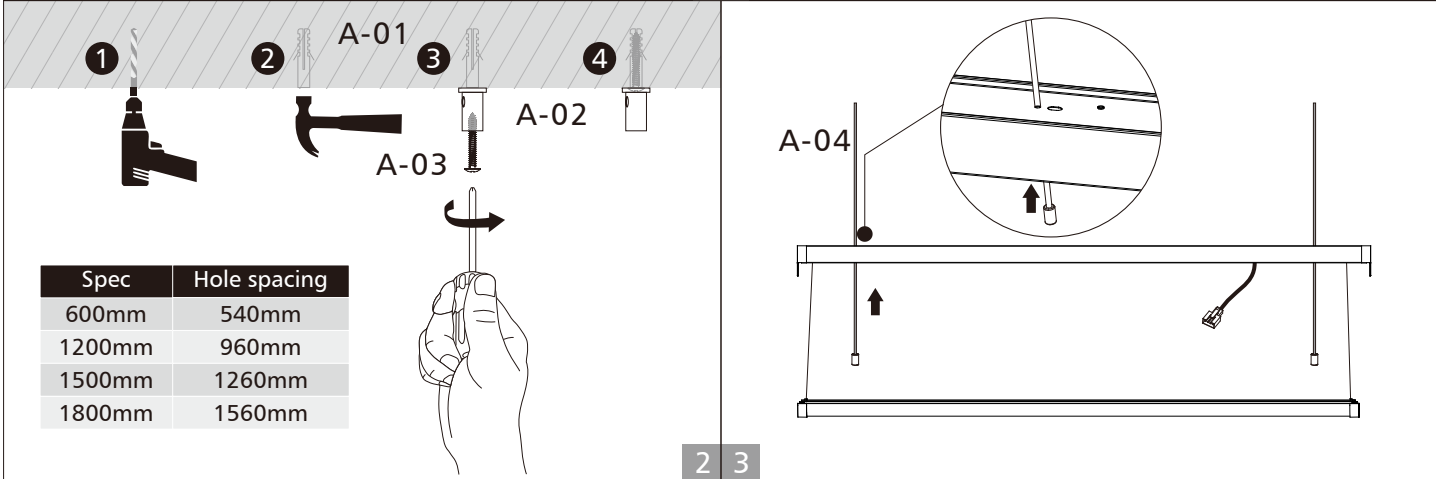
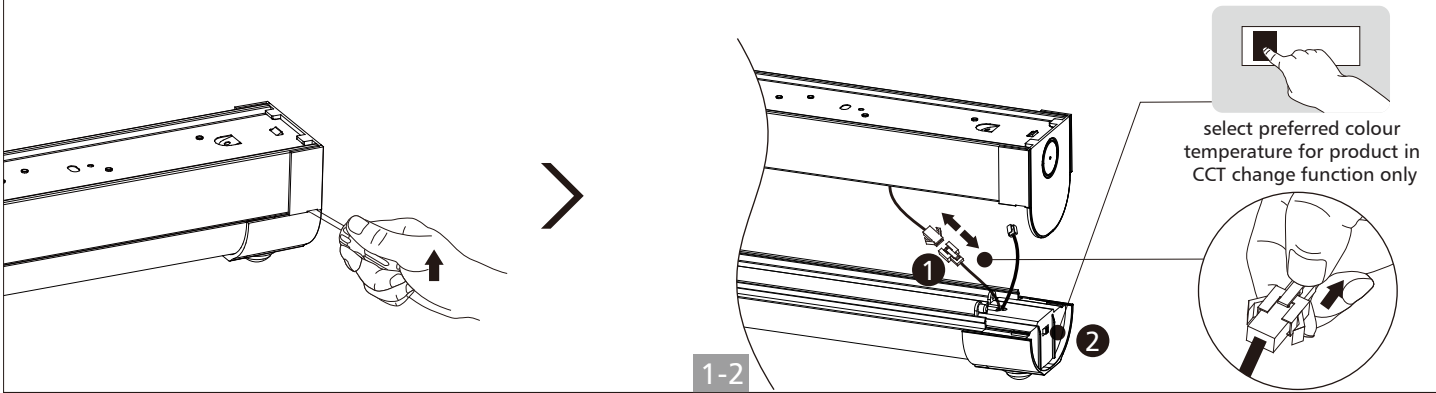
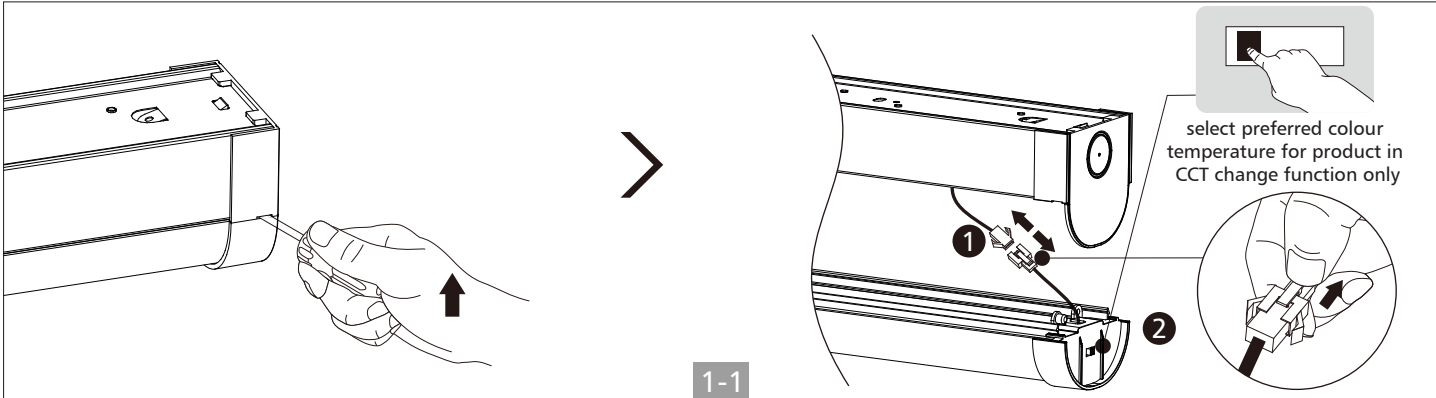


### Splicing for surface mount installation



Pendant installation

Code	A-01 	A-02 	A-03 	A-04 
ACC	x2	x2	x2	x2





UPSHINE | *Up to Shine, there is life*  
光之上，是生活

▼ [www.upshine.com](http://www.upshine.com) [info@upshine.com](mailto:info@upshine.com) TEL: +86 755 2919 7332 ▼

Add: 2nd building Dingfeng High-Tech Zone, Fuyuan 1st road, Fu Yong Sub-district, Bao'an, Shenzhen China